

**MVHR DUCTING  
SYSTEM**

**10  
Series**

**15  
Series**

**20  
Series**

**30  
Series**



**Duct & Joint**  
VENTILATION DUCTING SYSTEMS



## DUCT & JOINT INTRODUCTION

**The Duct & Joint range is a ducting system specifically designed for the residential and small commercial mechanical ventilation with heat recovery (MVHR) industry.**

**It is a fit for purpose system, which for the first time, offers the design professional a menu of options when designing low pressure, high efficiency duct layouts.**

The residential ventilation industry has seen many iterations in recent years, including traditional galvanised duct, various flexible offerings, high velocity semi-rigid small diameter polyethylene, flat channel rectangular and standard round solid PVC duct. The Duct & Joint system offers high performance and low pressure loss, plus many other advantages for the specifier, installer and end-user, not found with the round and rectangular alternative.

The key to good design is low velocity laminar airflow, with the resulting low pressure, high efficiency system throughout. The average bedroom and en-suite bathroom typically require around 9 litres/second of air supplied and extracted respectively, at standard speed. This equates to 1.37 meters/second in the smallest duct series, the 10. For the larger applications such as the kitchen and master bedroom, the larger 15 series is more than adequate. The larger 20 and 30 series duct systems are ideal for the airflows required in system headers and small commercial applications. These might include school classrooms, doctors waiting rooms etc.

*"The duct and joint system has made my life much simpler. There is a fitting for all situations. It is so much easier to handle and when you make a joint, it just kind of clicks together in a way that you know it is sealed and will not leak air."*

**David Sinclair** MVHR Installer





**The highly engineered joint enables  
a complete seal to the duct**

## FOR THE INSTALLER

- A full range of sizes and fittings for all eventualities.
- Easy to handle packs-of-ten with the 10 ducts fitting in side the 15 ducts.
- The stackable packs are easily transported and stored.
- Guaranteed leak-free installation.
- Eliminates the need for insulating even if installed in a cold roof space as the 60mm low profile will always have a covering of building insulation above it.
- The low profile reduces the risk of cold bridging when installed along the length of rafters.

## FOR THE DESIGNER

- The unique tab-locator design of the joints allow for a totally airtight and leak free system with minimal application of sealant.
- The range of sizes available allow for a constant volume design throughout your application.
- The flat oval profile of the duct offers low resistance to airflows and hence resulting in greater efficiency.
- Smooth cleanable interior surfaces.
- The low profile allows a full integration of the system into walls, floors, in and under ceilings without the need for unsightly and expensive box-outs.
- The comprehensive range of sizes and assortment of fittings provide a perfect solution for all low-volume ventilation applications.
- The high mechanical strength of the flat-oval section allows it to be cast in concrete floors if necessary.



**Easier to handle,  
cheaper to install**

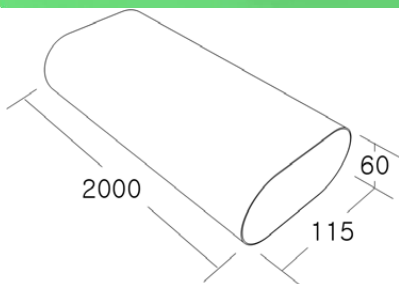
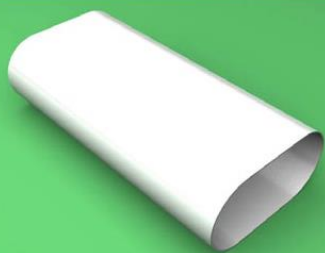
## FOR THE END USER

The product allows for a well designed, low pressure, constant volume, low noise and high efficiency smooth surface ducting system to be fully integrated into your build project, which will carry air safely and efficiently for the many decades of a building's life.

# 10 SERIES

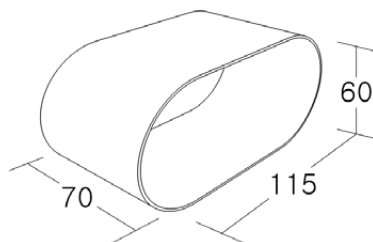
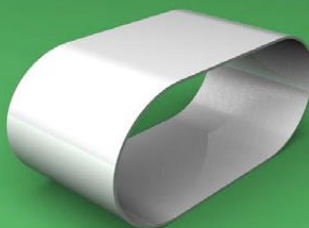
## Item Code DJ-1000

115 x 60 Oval Duct 2000mm



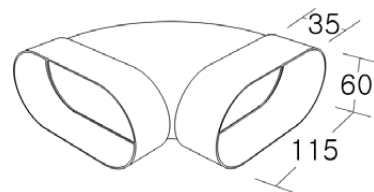
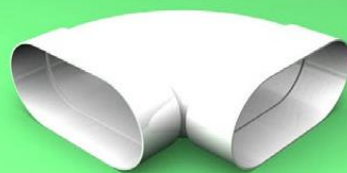
## Item Code DJ-1010

115X60 Coupling



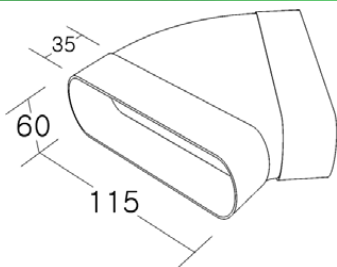
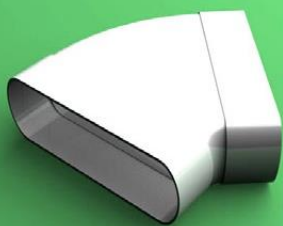
## Item Code DJ-1020

115X60 Hor 90 Deg Elbow



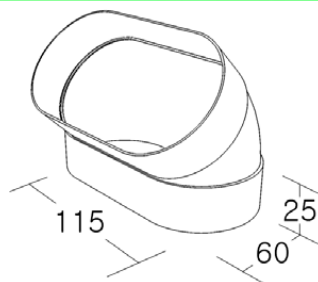
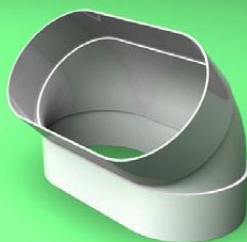
## Item Code DJ-1030

115X60 Hor 45 Deg Elbow



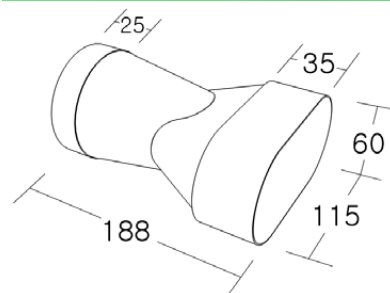
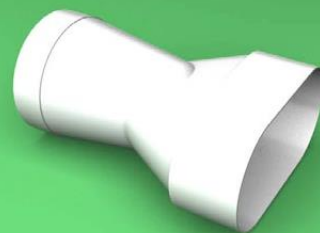
## Item Code DJ-1040

115X60 Vert 45 Deg Elbow



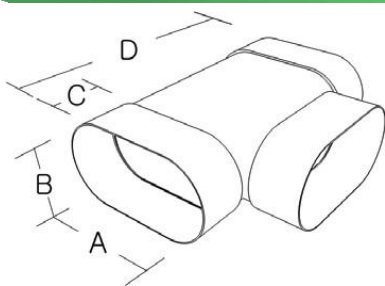
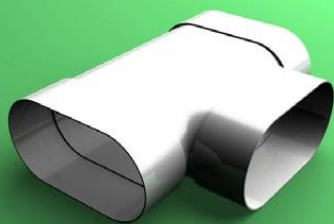
## Item Code DJ-1050

115X60 Reducer 100 Round



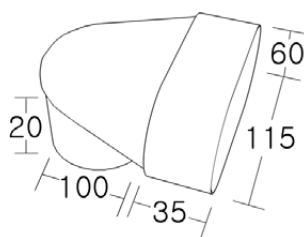
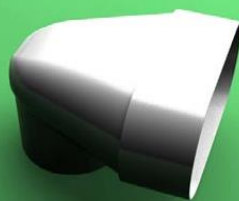
## Item Code DJ-1060

115X60 Tee 115/115



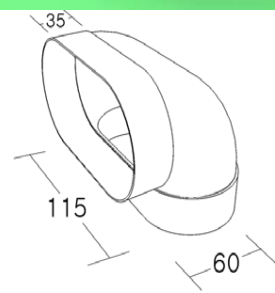
## Item Code DJ-1070

Adaptor 100mm 90 Deg Bend



## Item Code DJ-1080

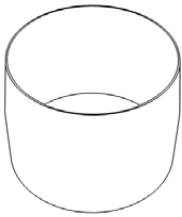
Vertical 90 Deg Elbow



**Item Code DJ-1090**  
115X60 Round Converter 97.5/100



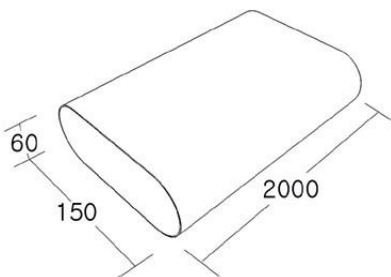
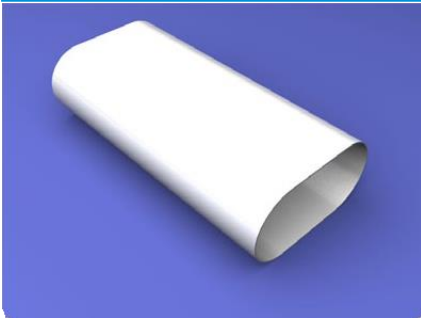
97.5



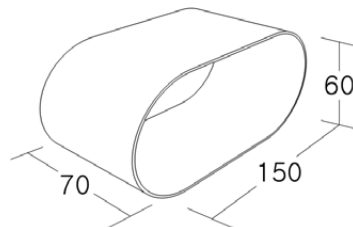
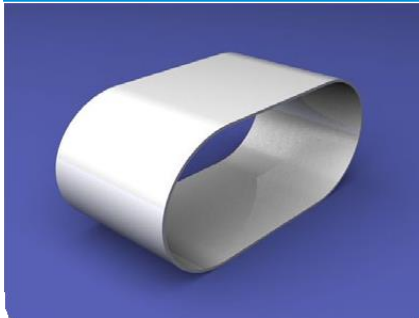
100

## 15 SERIES

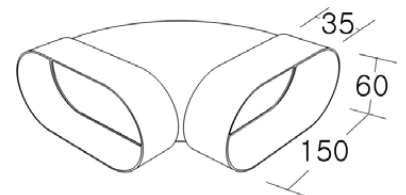
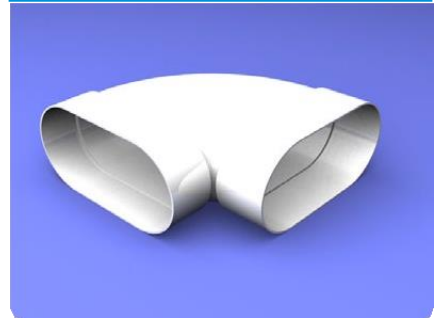
**Item Code DJ-1500**  
150X60 Oval Duct 2000mm



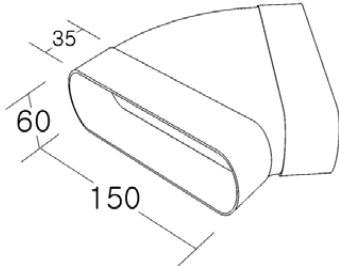
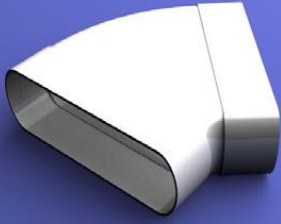
**Item Code DJ-1510**  
150X60 Coupling



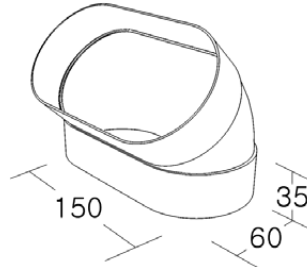
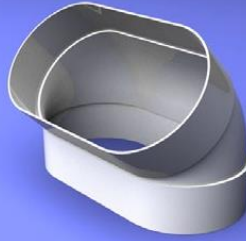
**Item Code DJ-1520**  
150X60 Hor 90 Deg Elbow



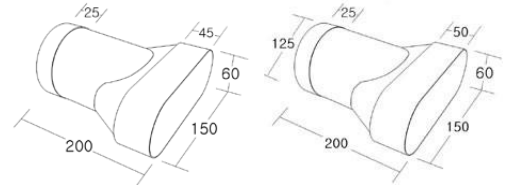
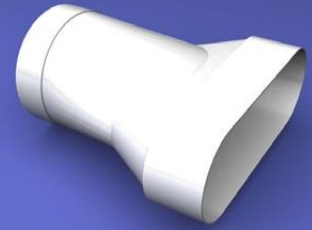
**Item Code DJ-1530**  
150X60 Hor 45 Deg Elbow



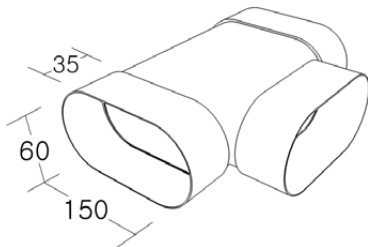
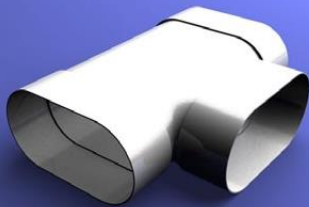
**Item Code DJ-1540**  
150X60 Hor 45 Deg Elbow



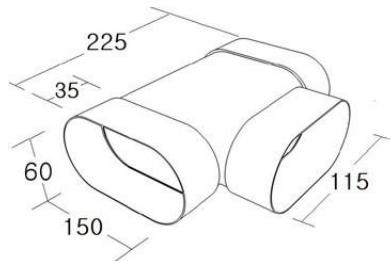
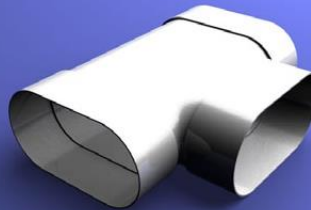
**Item Code DJ-1550/1551**  
Reducer Straight 100/125 Round



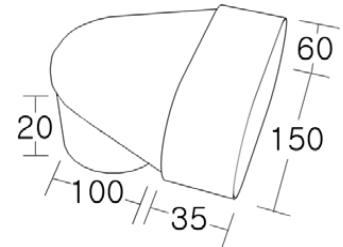
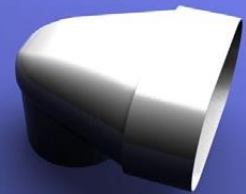
**Item Code DJ-1560**  
150X60 Oval 150/150



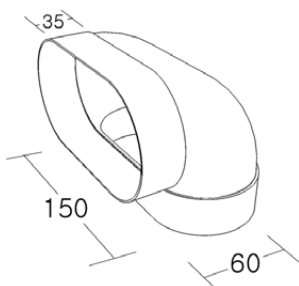
**Item Code DJ-1561**  
150X60 Oval 150/115



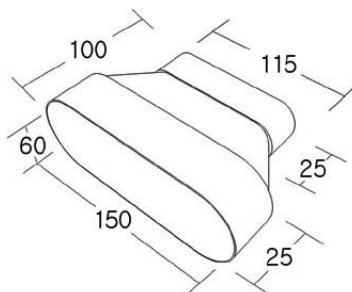
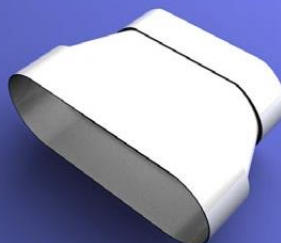
**Item Code DJ-1570**  
Adaptor 100mm Round 90 Deg Ben



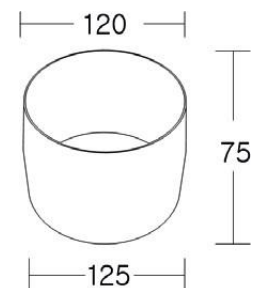
**Item Code DJ-1580**  
150X60 Vert 90 Deg Elbow



**Item Code DJ-1590**



**Item Code DJ-1591**

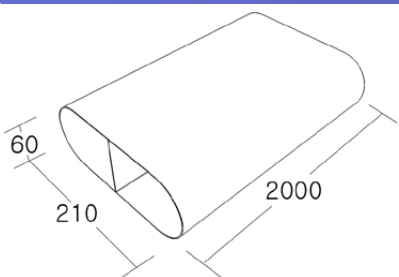
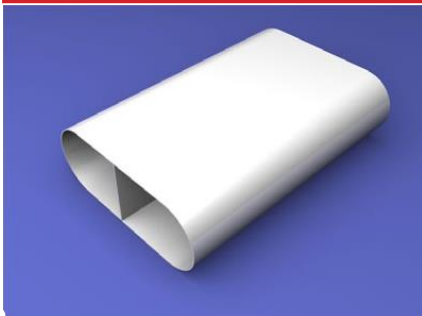




# 20 SERIES

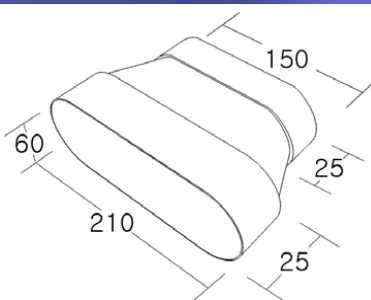
## Item Code DJ-2000

210X60 Oval Duct 2000mm



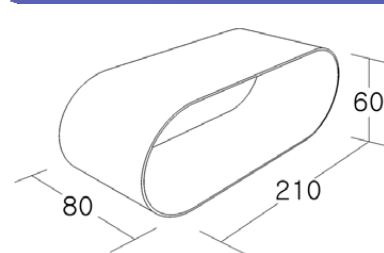
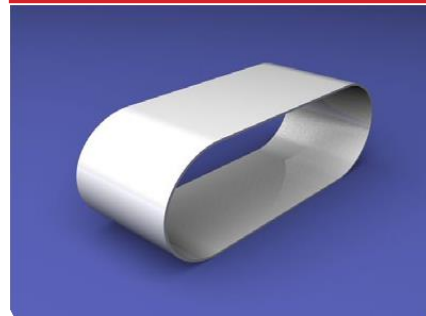
## Item Code DJ-2091

210X60 Oval Reducer 210/115



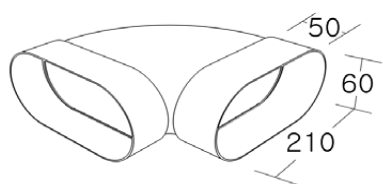
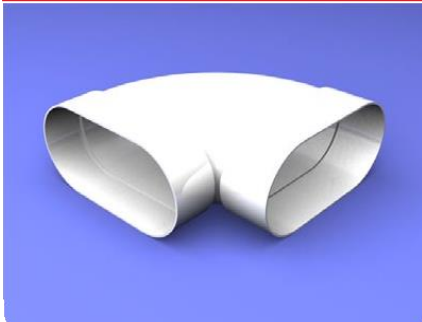
## Item Code DJ-2010

210X60 Coupling



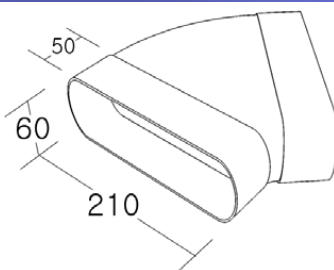
## Item Code DJ-2020

210X60 Hor 90 Deg Elbow



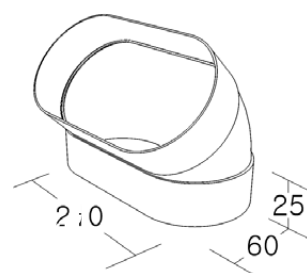
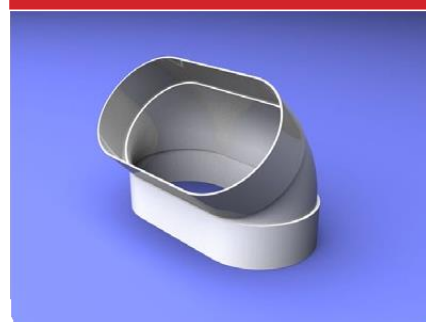
## Item Code DJ-2030

210X60 Hor 45 Deg Elbow



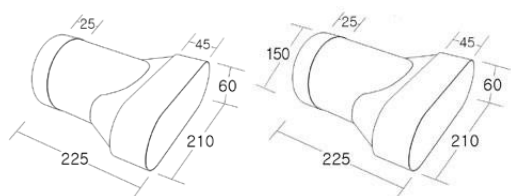
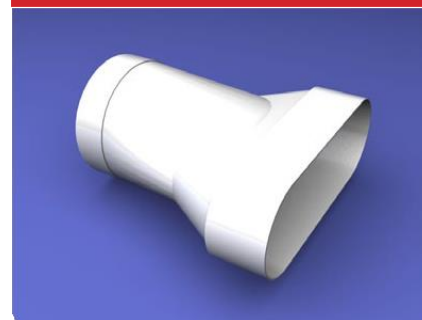
## Item Code DJ-2040

210X60 Vert 45 Deg Elbow



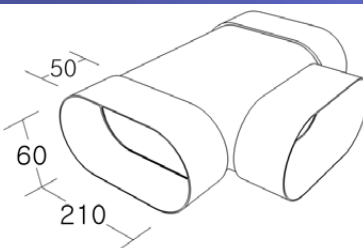
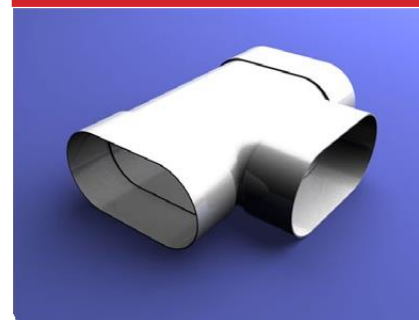
## Item Code DJ-2050/2051

Reducer Straight 150mm Round



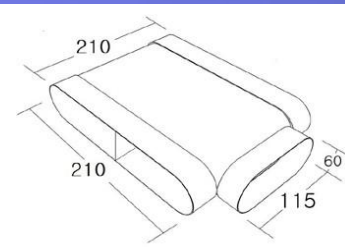
## Item Code DJ-2060

210X60 Oval Tee 210/210



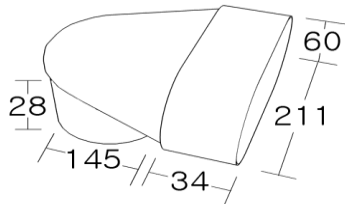
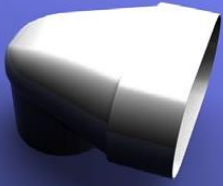
## Item Code DJ-2061

210X60 Oval Tee 210/115

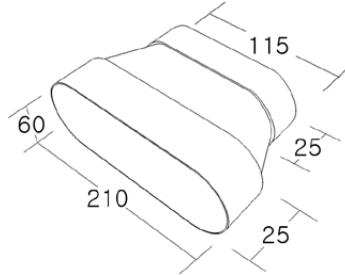
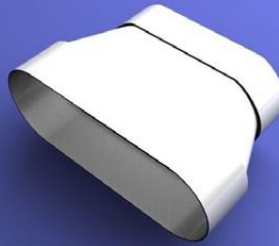
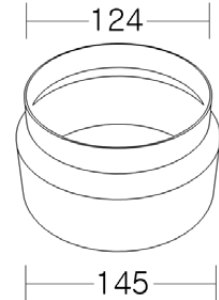
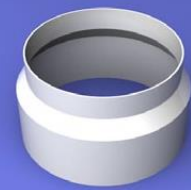


**Item Code DJ-2070**

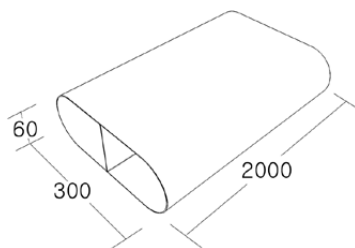
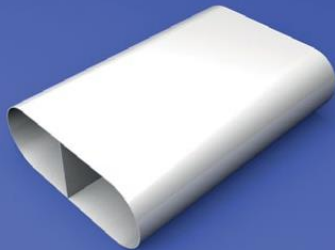
Adaptor 145mm 90 Bend

**Item Code DJ-2090**

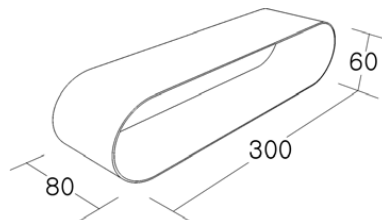
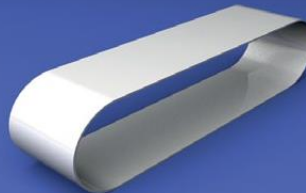
210X60 Oval Reducer 210/115

**Item Code DJ-2110****30 SERIES****Item Code DJ-3000**

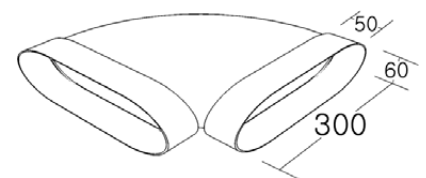
300X60 Oval Duct 2000mm

**Item Code DJ-3010**

300X60 Coupling

**Item Code DJ-3020**

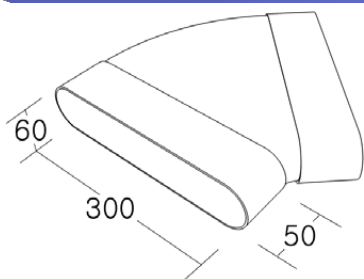
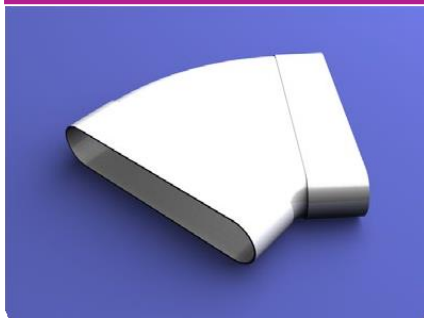
300X60 Hor 90 Deg Elbow



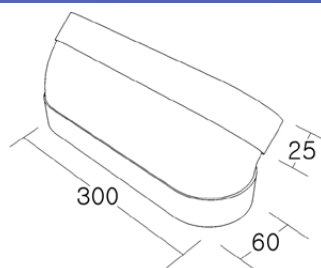


**Item Code DJ-3030**

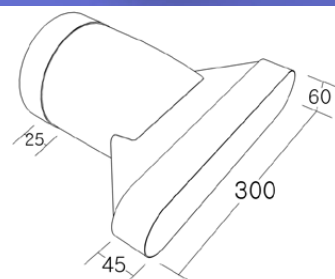
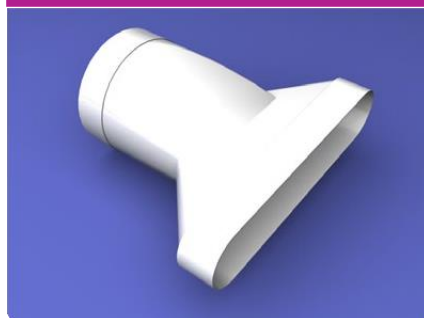
300X60 Hor 45 Deg Elbow

**Item Code DJ-3040**

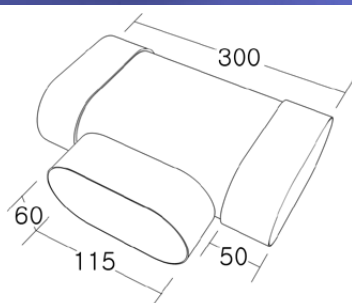
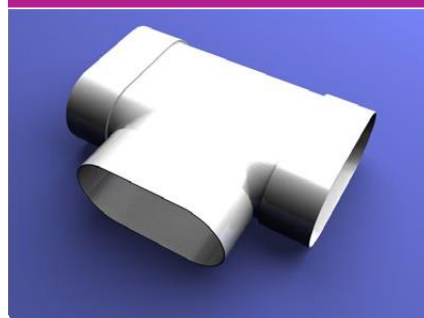
300X60 Vert 45 Deg Elbow

**Item Code DJ-3050**

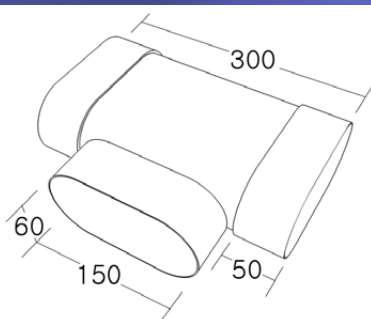
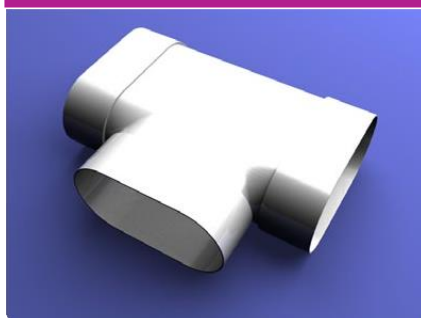
Reducer Straight 150mm Round

**Item Code DJ-3060**

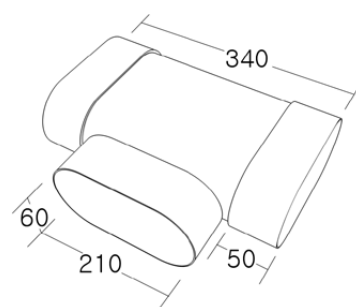
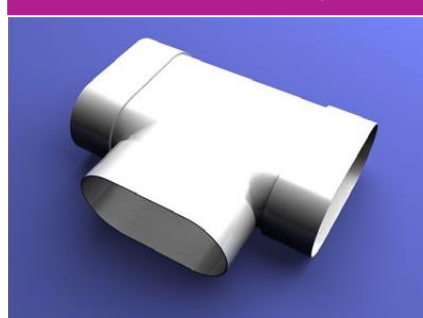
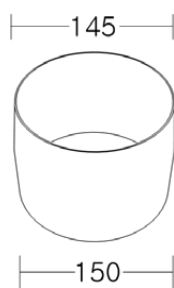
300X60 Oval Tee 300/115

**Item Code DJ-3061**

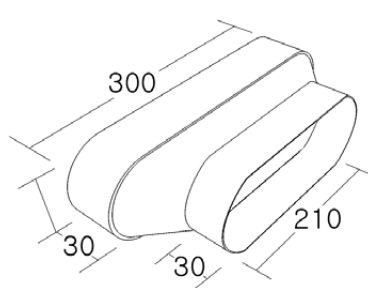
300X60 Oval Tee 300/150

**Item Code DJ-3062**

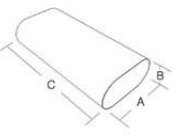
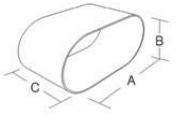
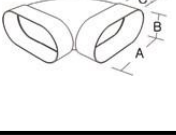
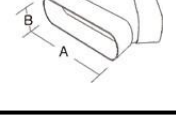
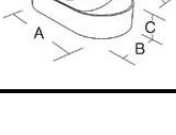
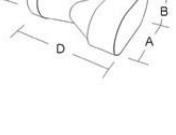
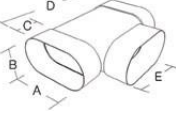
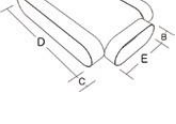
300X60 Oval Tee 300/210

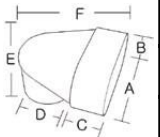
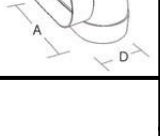
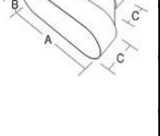
**Item Code DJ-3110****Item Code DJ-3090**

300X60 Oval Reducer 300/210



# Product Summary

		A	B	C	D	E
	DJ-1000	115	60	2000		
	DJ-1500	150	60	2000		
	DJ-2000	210	60	2000		
	DJ-3000	300	60	2000		
	DJ-1010	115	60	70		
	DJ-1510	150	60	70		
	DJ-2010	210	60	80		
	DJ-3010	300	60	100		
	DJ-1020	115	60	35	153	
	DJ-1520	150	60	35	190	
	DJ-2020	210	60	50	265	
	DJ-3020	300	60	50	355	
	DJ-1030	115	60	35	143	
	DJ-1530	150	60	35	170	
	DJ-2030	210	60	50	240	
	DJ-3030	300	60	50	305	
	DJ-1040	115	60	25	95	
	DJ-1540	150	60	25	95	
	DJ-2040	210	60	25	95	
	DJ-3040	300	60	25	95	
	DJ-1050	115	60	35	185	100
	DJ-1550	150	60	35	200	100
	DJ-1551	150	60	35	200	125
	DJ-2050	210	60	45	200	125
	DJ-2051	210	60	45	200	150
	DJ-3050	300	60	45	200	150
	DJ-1060	115	60	35	190	115
	DJ-1560	150	60	35	225	150
	DJ-1561	210	60	50	225	115
	DJ-2060	210	60	50	300	210
	DJ-2061	210	60	50	225	115
	DJ-3060	300	60	50	300	115
	DJ-3061	300	60	50	300	150
	DJ-3062	300	60	50	340	210

		A	B	C	D	E	F
	DJ-1070	115	60	35	100	80	40
	DJ-1570	150	60	35	100	80	140
	DJ-2070	210	60	35	145	90	210
	DJ-1080	115	60	35	97		
	DJ-1580	150	60	35	100		
	DJ-1590	150	60	25	115	100	
	DJ-2090	210	60	25	115	100	
	DJ-2091	210	60	25	150	100	
	DJ-3090	300	60	30	210	120	
	DJ-2001	235	40	400			
	DJ-2092	235	40	25	210	100	

# Product Codes and Descriptions

## 10 SERIES

CODE	DESCRIPTION
DJ-1000	115X60 Oval Duct 2000mm
DJ-1010	115X60 Coupling
DJ-1020	115X60 Hor 90 Elbow
DJ-1030	115X60 Hor 45 Elbow
DJ-1040	115X60 Vert 45 Elbow
DJ-1050	115X60 Reducer 100 Round
DJ-1060	115X60 Tee Oval 115/115
DJ-1070	115X60 Adaptor 100mm 90 Bend
DJ-1080	115X60 Vert 90 Elbow
DJ-1090	115X60 Round Converter 95/100
DJ-1111	115X60 Clip

## 15 SERIES

CODE	DESCRIPTION
DJ-1500	150X60 Oval Duct 2000mm
DJ-1510	150X60 Coupling
DJ-1520	150X60 Hor 90 Elbow
DJ-1530	150X60 Hor 45 Elbow
DJ-1540	150X60 Vert 45 Elbow
DJ-1550	150X60 Reducer Straight 100 Round
DJ-1551	150X60 Reducer Straight 125 Round
DJ-1560	150X60 Tee Oval 150/150
DJ-1561	150X60 Tee Oval 150/115
DJ-1570	150X60 Adaptor 100mm Round 90 Bend
DJ-1580	150X60 Vert 90 Elbow
DJ-1590	150X60 Oval Reducer 150/115
DJ-1501	150X60 1501 Clip

## 20 SERIES

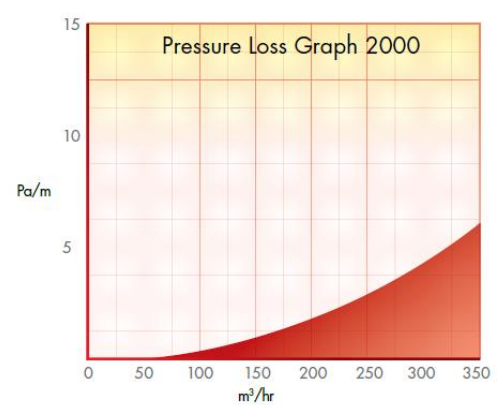
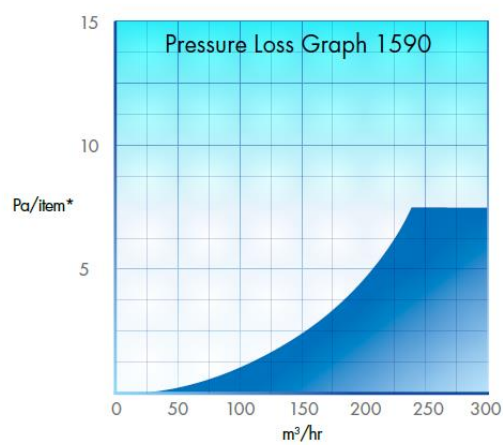
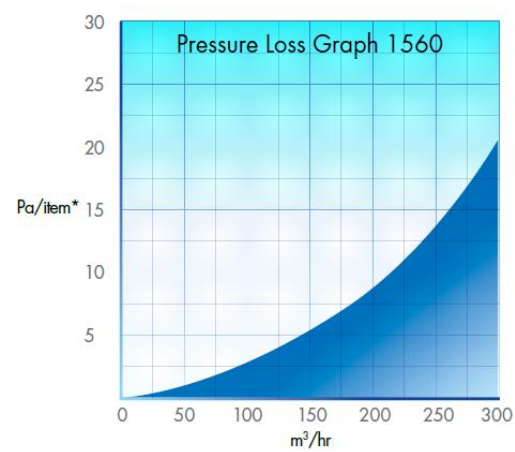
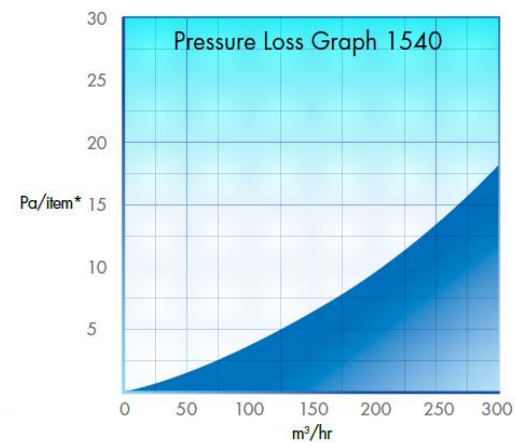
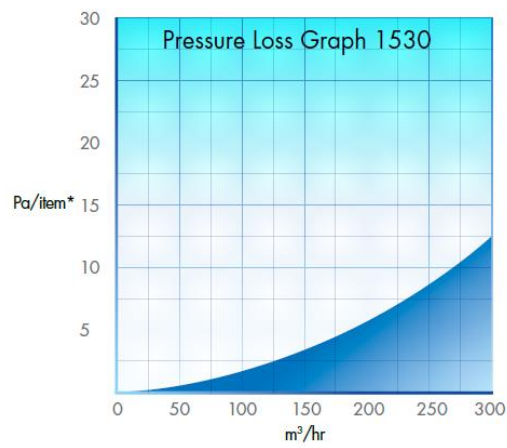
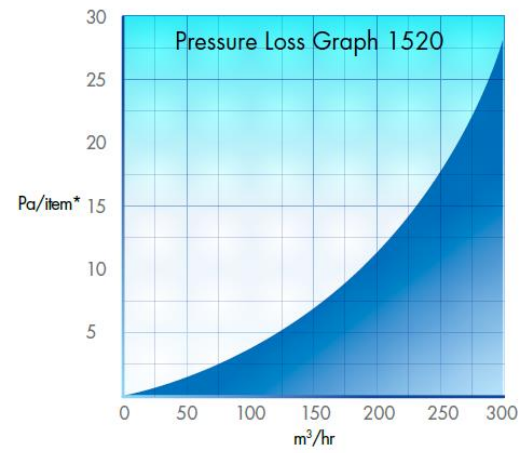
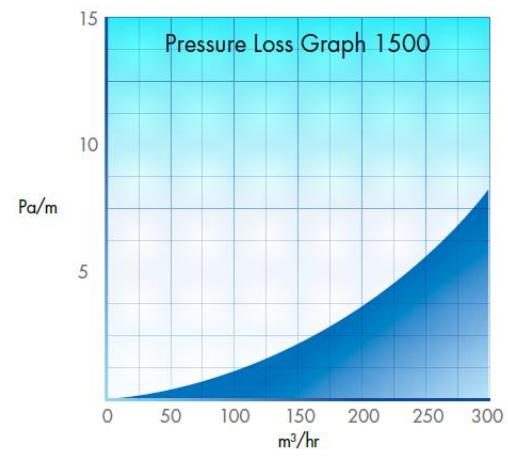
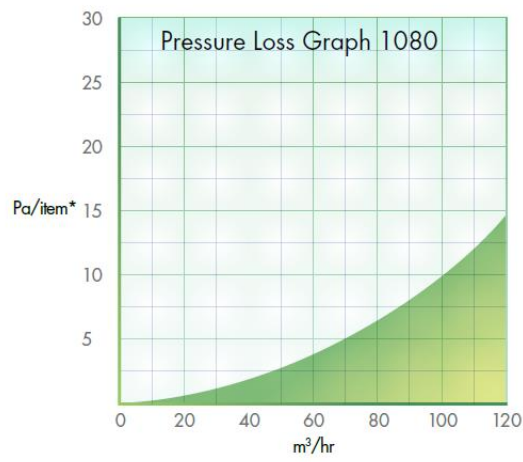
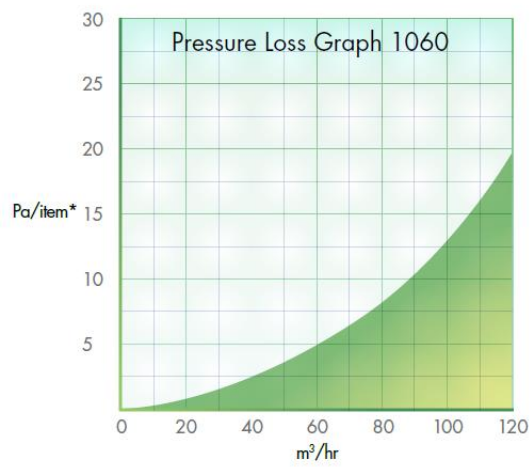
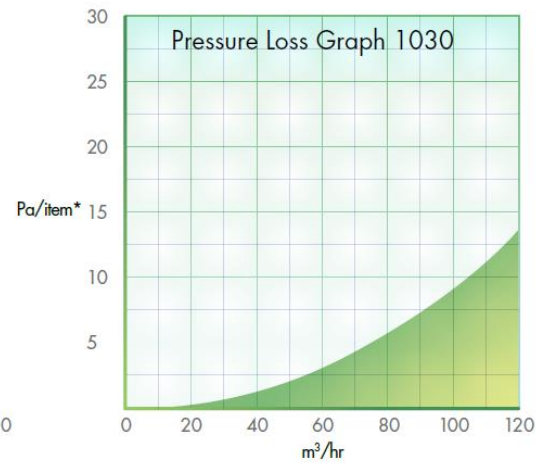
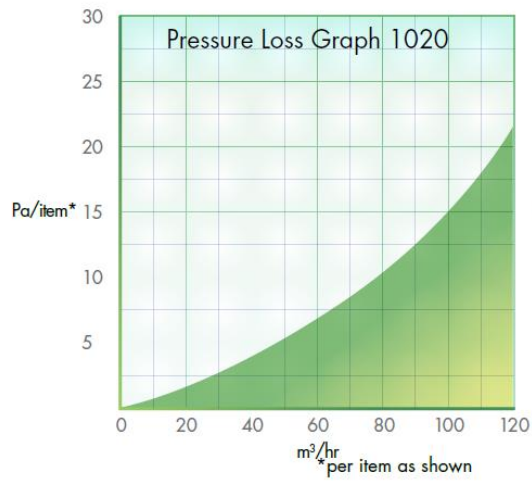
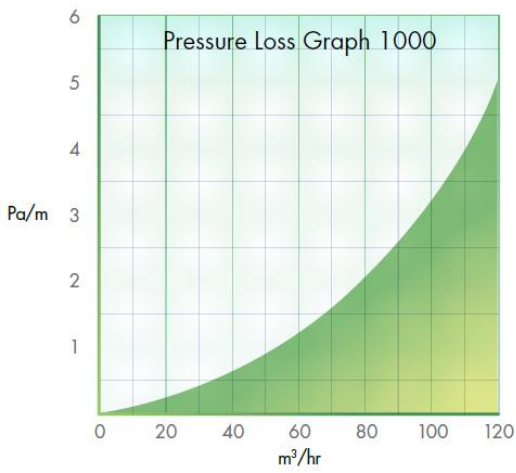
CODE	DESCRIPTION
DJ-2000	210X60 Oval Duct 2000mm
DJ-2010	210X60 Coupling
DJ-2020	210X60 Hor 90 Elbow
DJ-2030	210X60 Hor 45 Elbow
DJ-2040	210X60 Vert 45 Elbow
DJ-2050	210X60 Reducer Straight 125 Round
DJ-2051	210X60 Reducer Straight 150 Round
DJ-2060	210X60 Tee Oval 210/210
DJ-2061	210X60 Tee Oval 210/115
DJ-2070	210X60 Adaptor 145mm 90 Bend
DJ-2090	210X60 Oval Reducer 210/115
DJ-2091	210X60 Oval Reducer 210/115
DJ-2011	210X60 Clip

## 30 SERIES

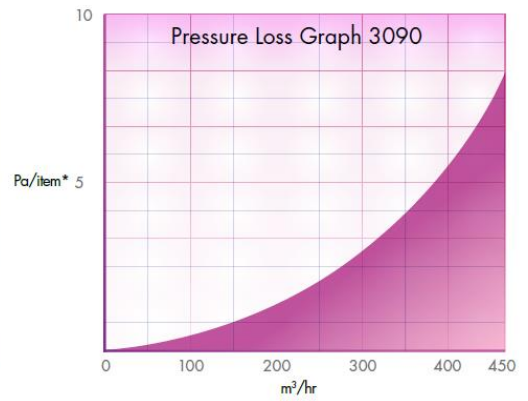
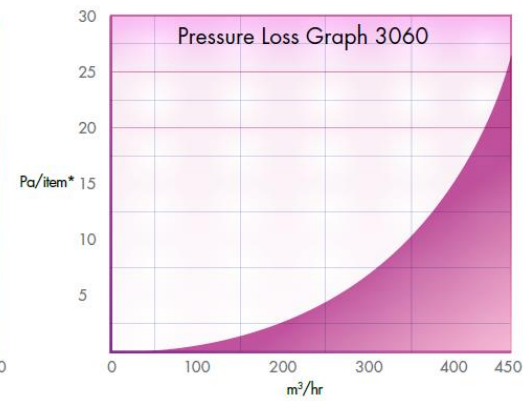
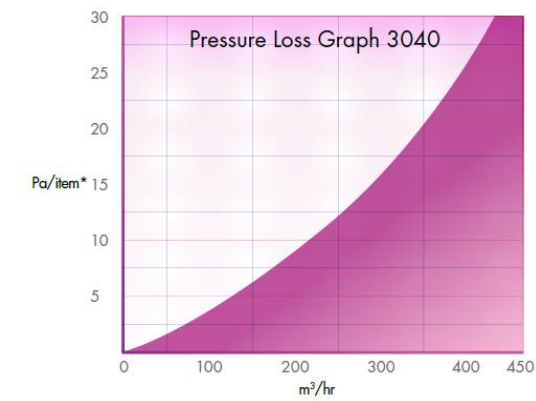
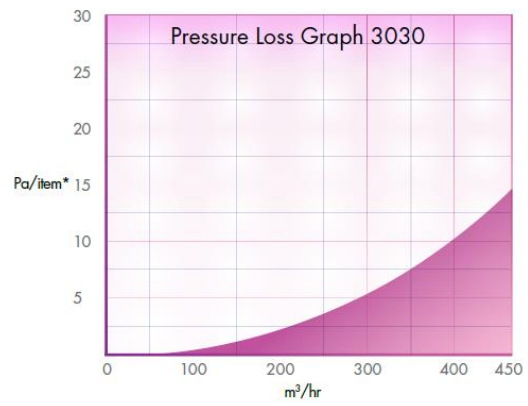
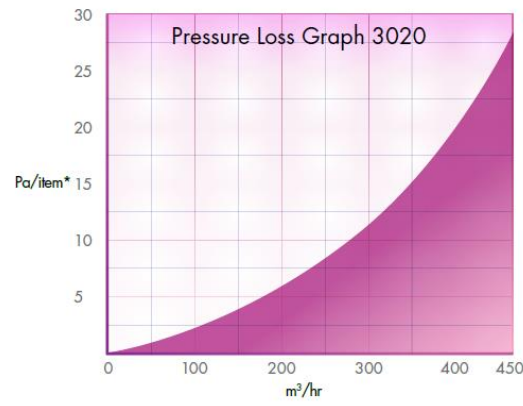
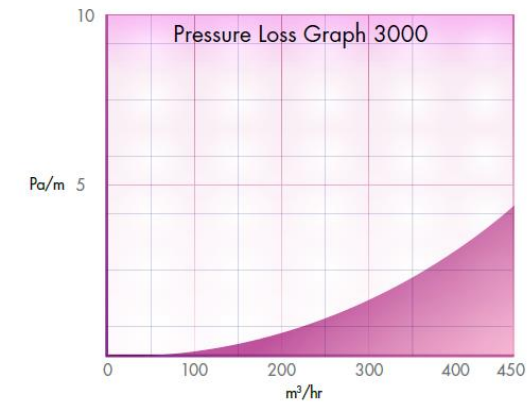
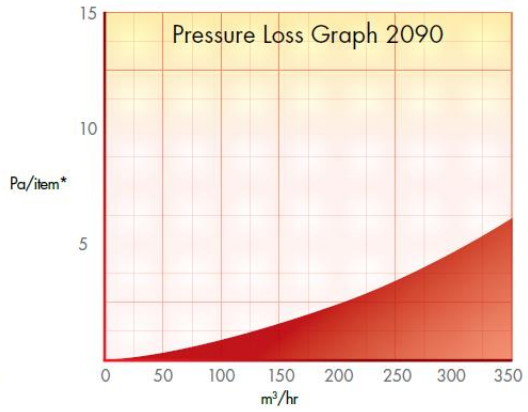
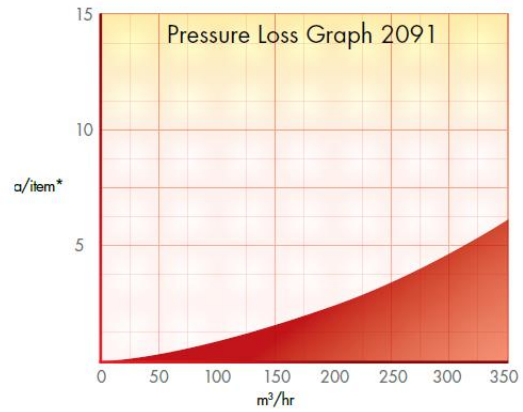
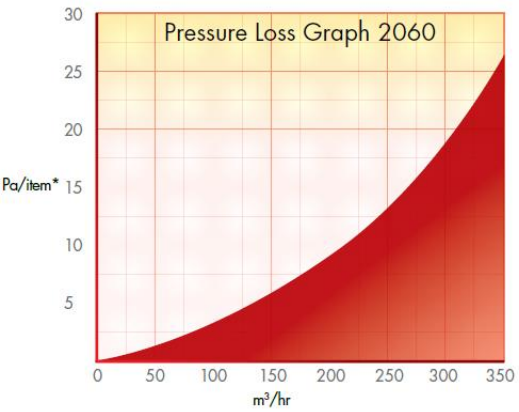
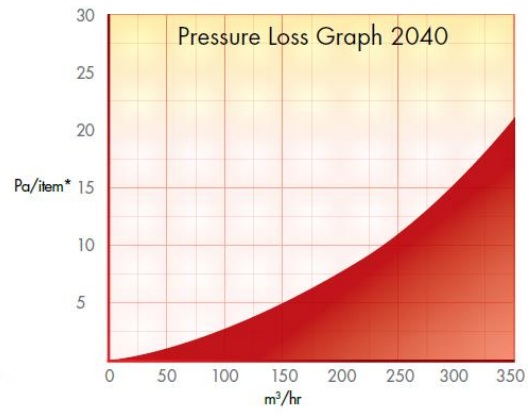
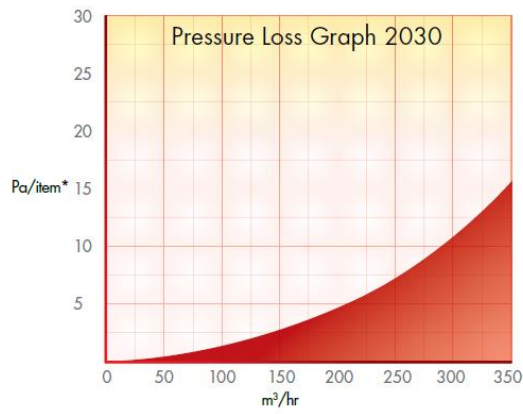
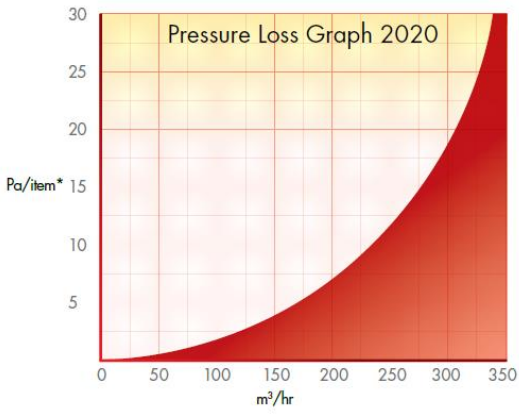
CODE	DESCRIPTION
DJ-3000	300X60 Oval Duct 2000mm
DJ-3010	300X60 Coupling
DJ-3020	300X60 Hor 90 Elbow
DJ-3030	300X60 Hor 45 Elbow
DJ-3040	300X60 Vert 45 Elbow
DJ-3050	300X60 Reducer Straight 150 Round
DJ-3060	300X60 Tee Oval 300/115
DJ-3061	300X60 Tee Oval 300/150
DJ-3062	300X60 Tee Oval 300/210
DJ-3090	300X60 Oval Reducer 300/210
DJ-3011	300X60 Clip

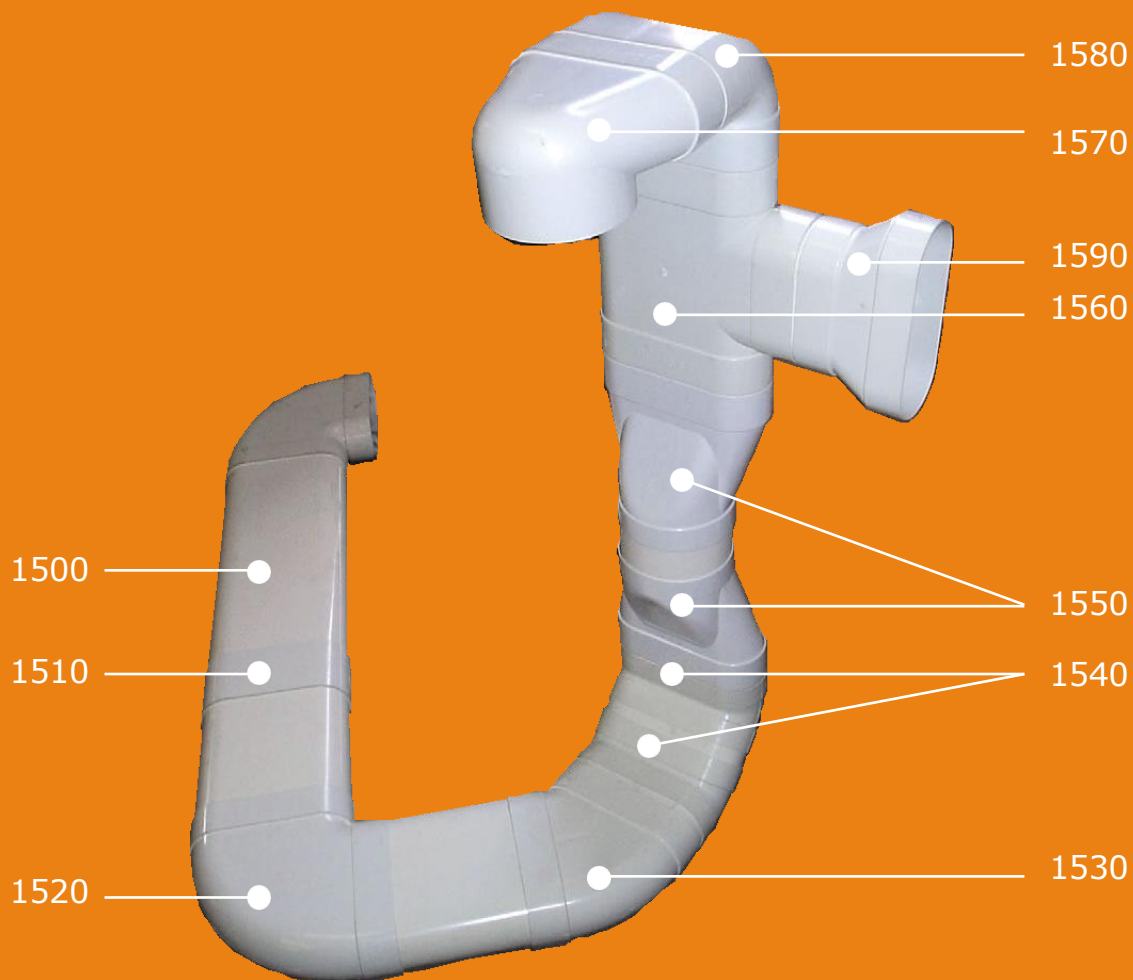


# GRAPHS



# GRAPHS





**ProAir**  
HEAT RECOVERY VENTILATION SYSTEMS  
*Irish Innovation in Indoor Air*



**Head Office**  
**Unit 1**  
**Polkeen Industrial Estate**  
**Castlegar**  
**Tuam Road**  
**Galway**  
**H91 WYR8**

**T 091 739 442**

**Dublin Office**  
**Unit P26**  
**Greenogue Business Park**  
**Rathcoole**  
**Grants Road**  
**Dublin**  
**D24 HW44**

**T 01 503 4296**

**Cork Office**  
**Unit A11**  
**Millennium Park**  
**Youghal**  
**Co. Cork**  
**P36 A522**

**T 089 274 8989**

**sales@proair.ie**

**www.proair.ie**